

Installing R, R-studio, and other R-packages

This handout describes the installation of R, RStudio and other packages needed during the course. Please install the software prior to the course.

Install R:

1. Go to the Comprehensive R Archive Network site: <https://cran.r-project.org>
2. Click the Download button for your system.
3. Select the installation file for your system. Windows users should select the 'base' distribution.
4. Run the installation file.

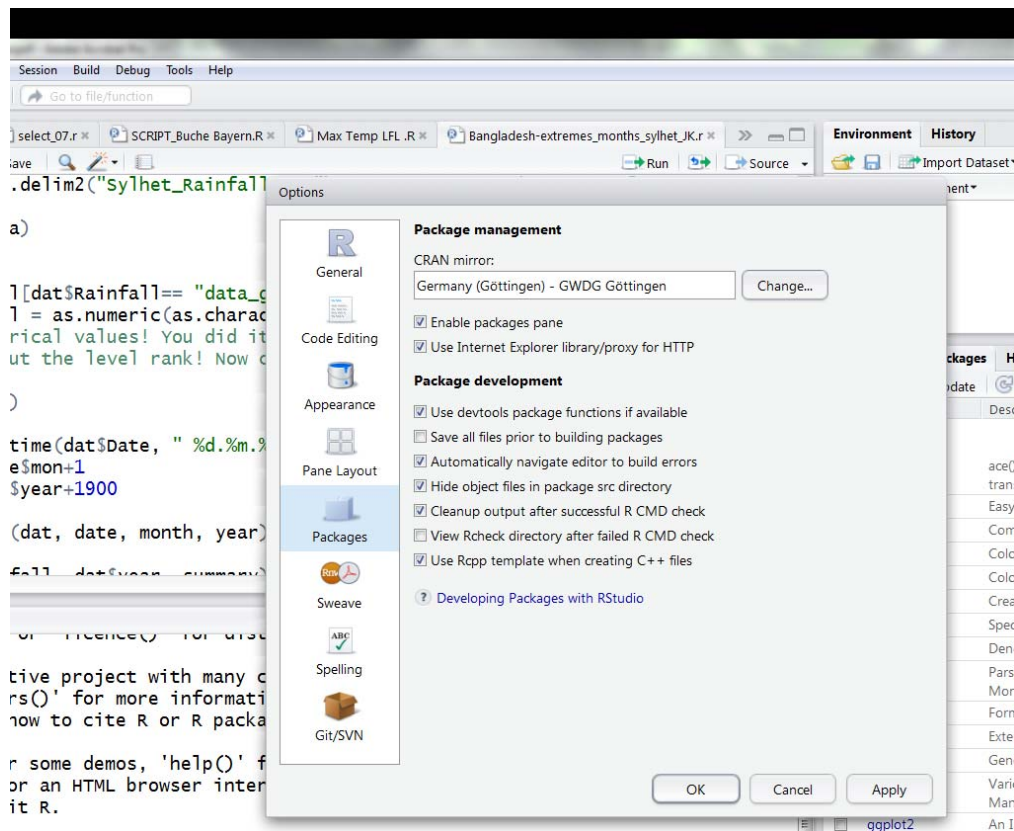
Install RStudio (graphical user interface for R):

1. Go to RStudio Download page: <https://www.rstudio.com/products/RStudio/>
2. Click the Download RStudio Desktop button.
3. Select the installation file for your system.
4. Run the installation file.

Upon installation, RStudio detects the installed version of R automatically.

Check whether a CRAN mirror is selected:

1. Open RStudio.
2. Click Tools > Global Options > Packages.
3. Check whether a mirror is selected under 'CRAN mirror'. If not, specify any mirror via the Change button; for example:



Install the additional package sciplot:

1. Go to the “Packages” tab in the bottom right panel of RStudio.
2. Click the “Install” button.
3. Select install from 'Repository (CRAN)', type the package name (sciplot) and tick “install dependencies”.
4. Click the Install button.

You are ready!